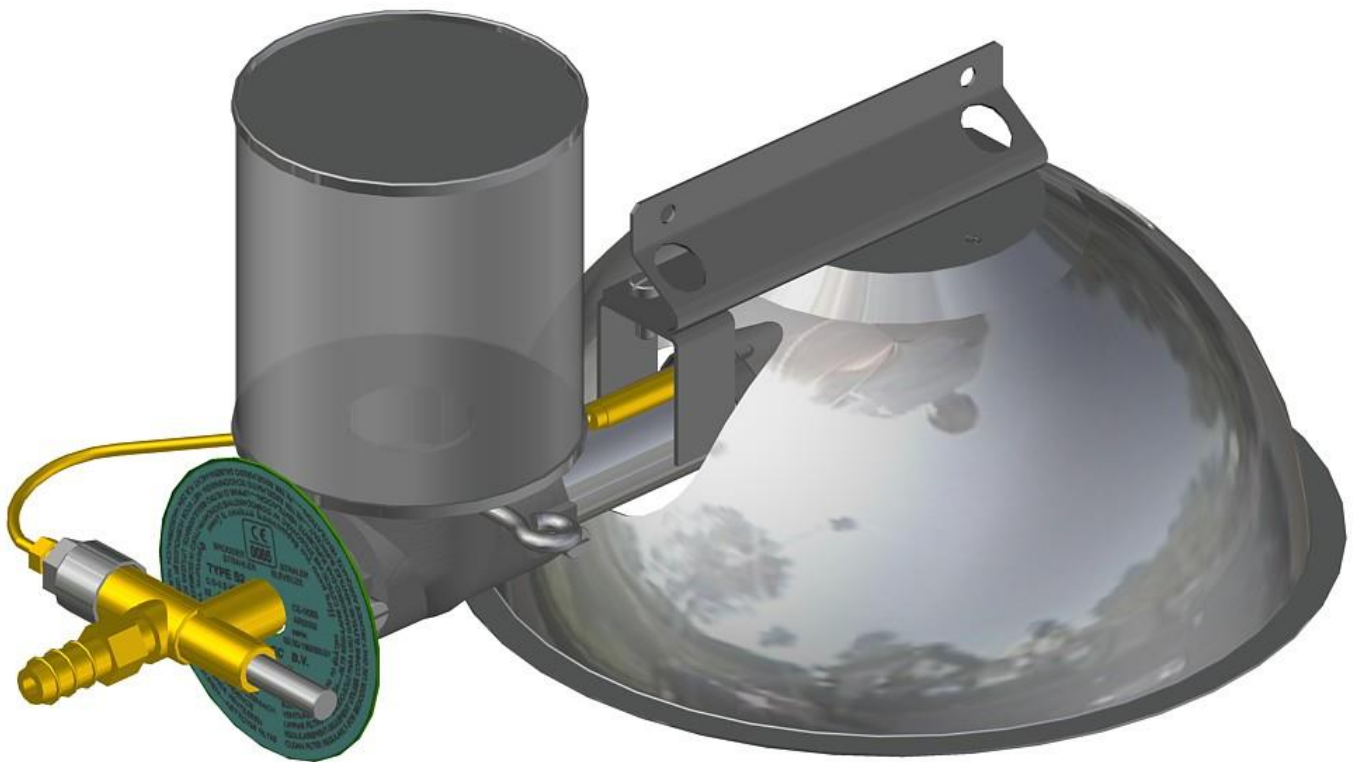


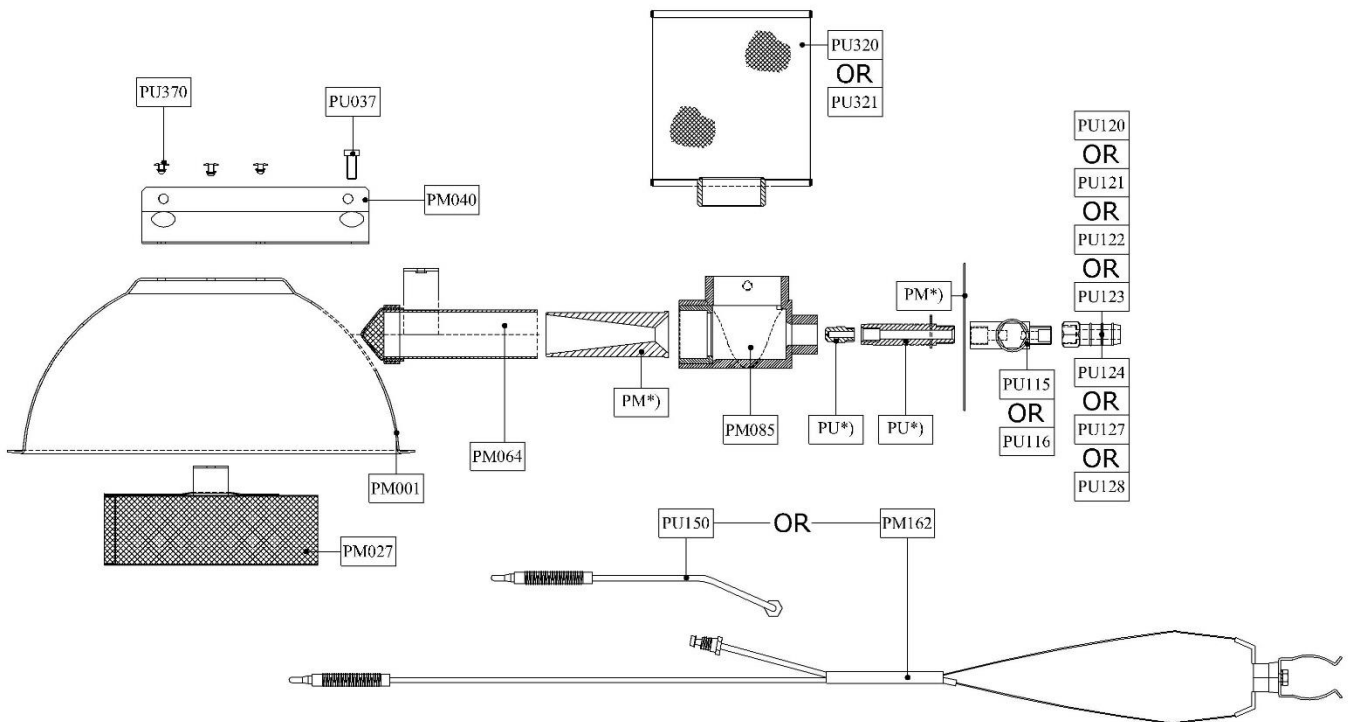


## Infrared Heater M3



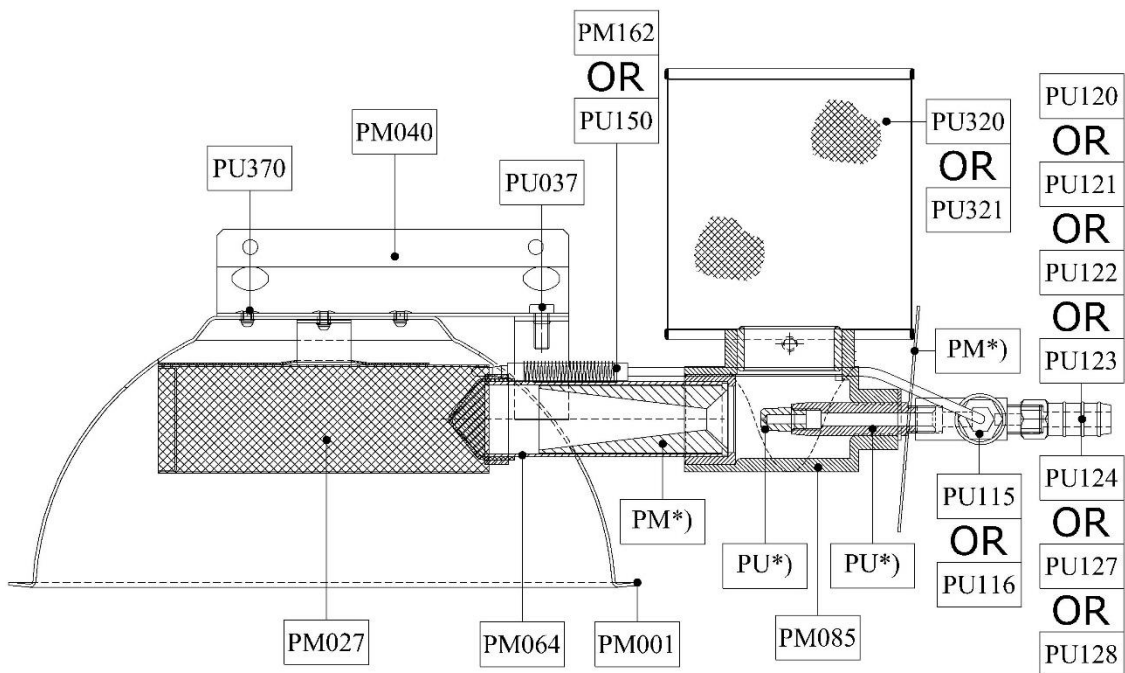
A

### Infrared Heater M3



B

### Infrared Heater M3




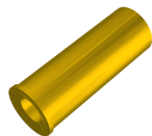
### Parts List M3

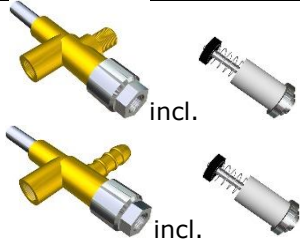


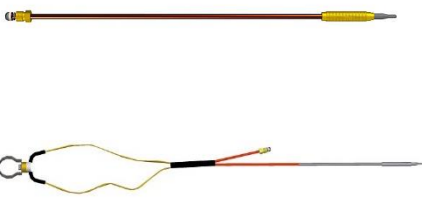
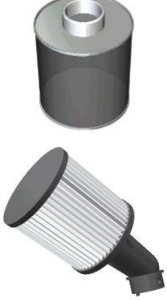
<b>Part:</b>	<b>#</b>	<b>Description:</b>	<b>Old Reference:</b>
PU*)	1	Jet S/M, depends on gas type and pressure	27
PU*)	1	Jet Holder S/M, depends on gas type and pressure	28
PM*)	1	Marking Plate M3, depends on gas type and pressure	40
PM*)	1	Venturi, depends on gas type and pressure	26
PM001	1	Reflector M2/ M3	21
PM027	1	Round Burner M3	22
PM040	1	Suspension Frame M2/ M3	23
PM064	1	Burner pipe M3 Point	24
PM085	1	T-piece special (for M-types) Incl. 2x PU036 – Screw M5x10 Incl. 1x PU038 – Thumb Screw T-piece M5x30x8	25
PU037	2	Screw S.S. M5x10 with spring ring	33
PU115 Or PU116	1	Safety Device without Hose Socket Incl. PU117 – Interior Coil Small  Safety Device with Hose Socket Incl. PU117 – Interior Coil Small	30
PU120 Or PU121 Or PU122 Or PU123 Or PU124 Or PU127 Or PU128	1	Hose Socket 1/8"F 9mm  Hose Socket 1/8"F 11mm  Hose Socket 1/8"F 8mm smooth  Bushing 1/8"F*3/8"M  Bushing 1/8"F*1/2"M  Special Connection Japan  CGA Connection	31
PU150  PM162	1  1	Thermocouple L=220mm  Or  Thermocouple with integrated Clixon	29
PU320 Or PU321	1	Stainless Steel Filter standard M/S  Filter M/S Heavy Duty	32
PU370	6	Rivet, stainless Ø4	36

### NOTES:

**PU\*) & PM\*):** Depends on gas type and pressure.  
**\*\*:** This also depends on gas type and pressure!

## Infrared Heater M3 Position Numbers

PU*)	Jet S/M, depends on gas type and pressure	
PU*)	Jet Holder S/M, depends on gas type and pressure	
PM*)	Marking Plate M3, depends on gas type and pressure	
PM*)	Venturi, depends on gas type and pressure	
PM001	Reflector M2/ M3	
PM026	Round Burner M3	
PM040	Suspension Frame M2/ M3	
PM064	Burner pipe M3 Point	
PM085	T-piece special (for M-types) Incl. 2x PU036 – Screw M5x10 Incl. 1x PU038 – Thumb Screw T-piece M5x30x8	
PU037	Screw S.S. M5x10 with spring ring	

PU115 Or PU116	Safety Device without Hose Socket Incl. PU117 - Interior Coil Small  Safety Device with Hose Socket Incl. PU117 - Interior Coil Small	
PU117	Magnetic Coil Small	
PU120 Or PU121 Or PU122 Or PU123 Or PU124 Or PU127 Or PU128	Hose Socket 1/8"F 9mm  Hose Socket 1/8"F 11mm  Hose Socket 1/8"F 8mm smooth  Bushing 1/8"F*3/8"M  Bushing 1/8"F*1/2"M  Special Connection Japan  CGA Connection	
PU150 Or PM162	Thermocouple L=220mm  Thermocouple with integrated Clixon	
PU320 Or PU321	Stainless Steel Filter standard M/S  Filter M/S Heavy Duty	
PU370	Rivet, stainless Ø4	